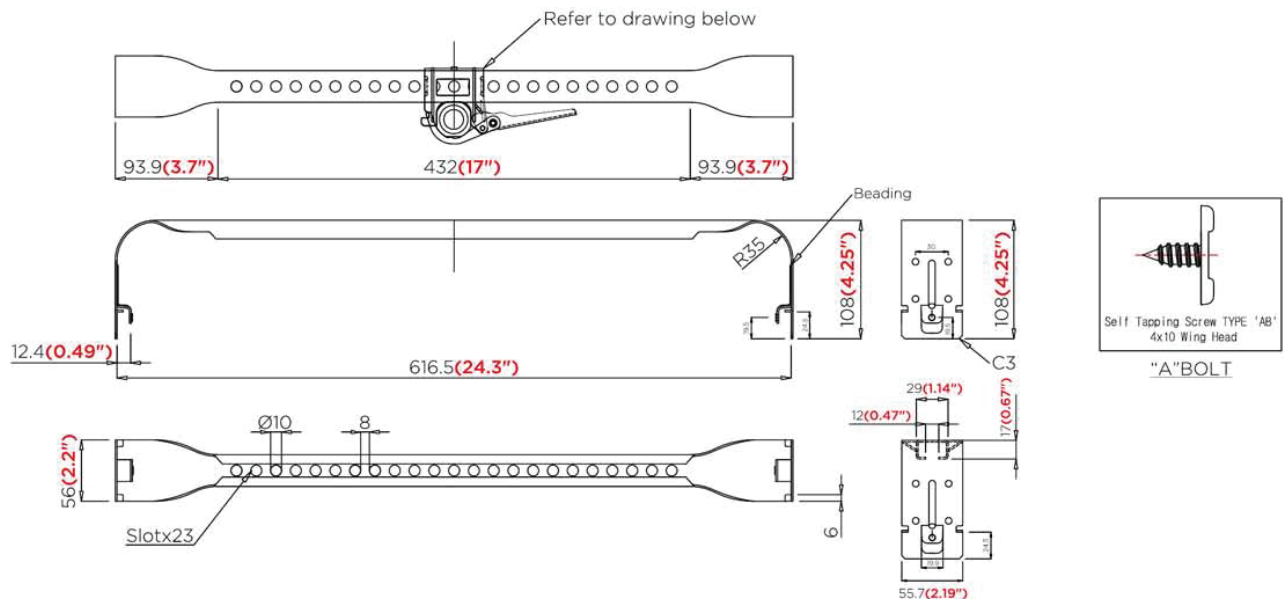
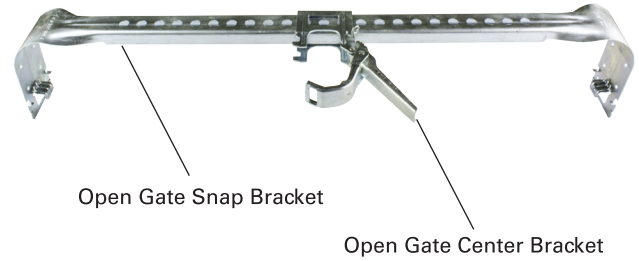




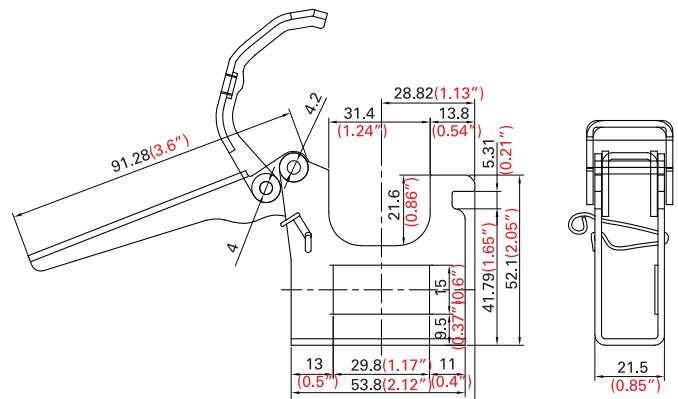
Open Gate Snap Bracket | **OGSB-02**

Scale	NS
Material	ASTM A-366
Tolerance	2.0mm, ± 0.05
Spec.	Zinc Plated
Coating durability	No indication of peeling
Anti-Corrosion	No indication of corrosion with salt spray test.



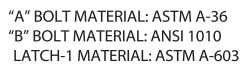
Open Gate Center Bracket | **OSSB**

Scale	NS
Material	ASTM A-526
Tolerance	± 0.3
Thickness	2.0mm, ± 0.05
Spec.	Zinc Plate
Coating durability	No indication of peeling
Anti-Corrosion	No indication of corrosion with salt spray test



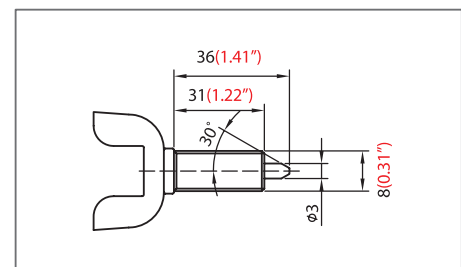
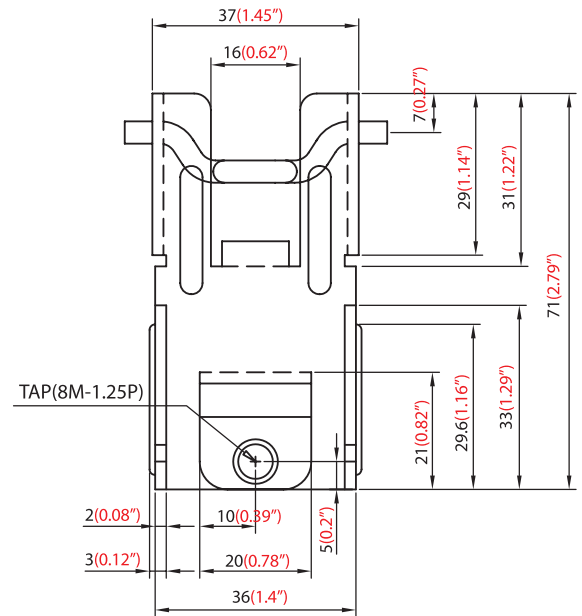
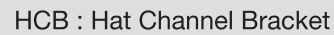


TBS : T-Bar Bracket for
Concealed or Recessed Heads





HCB : Hat Channel Bracket

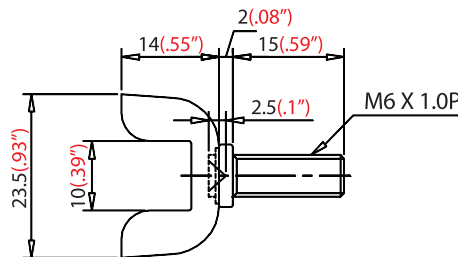
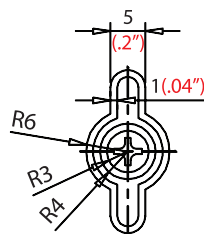
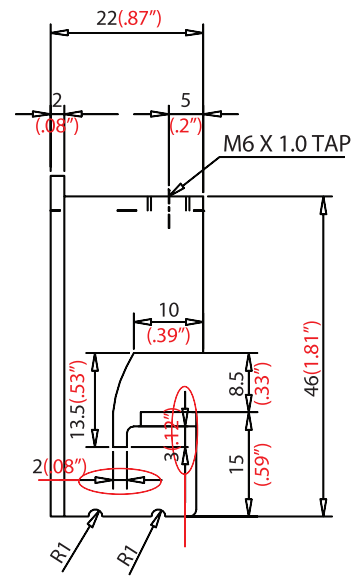
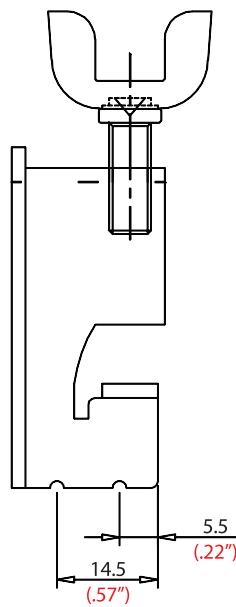
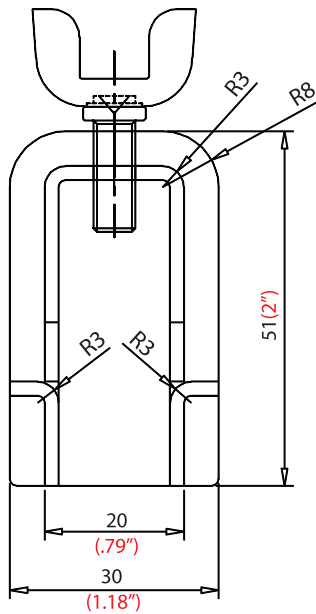
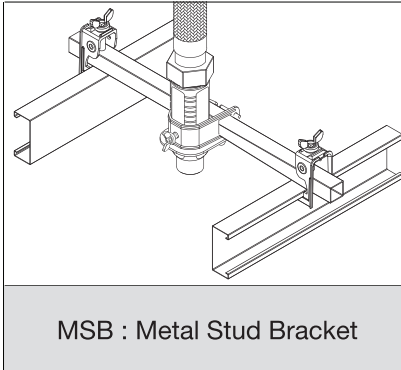


www.easyflexusa.com
Tel (Toll Free) : 888-577-8999 / Fax : 714-892-2221



Metal Stud Bracket | *MSB*

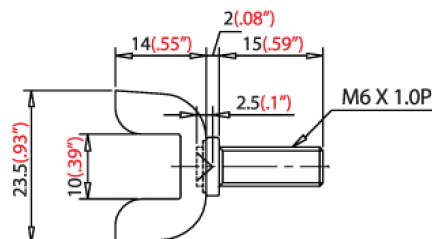
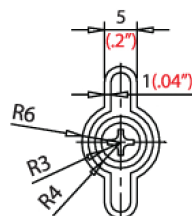
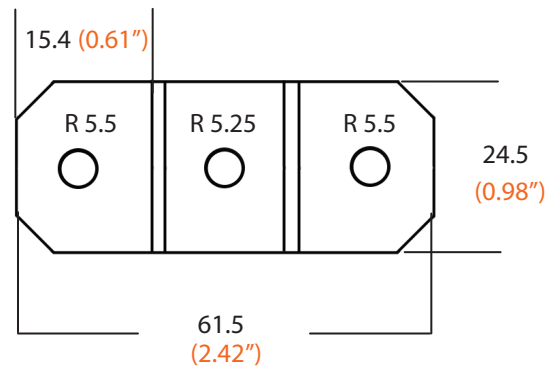
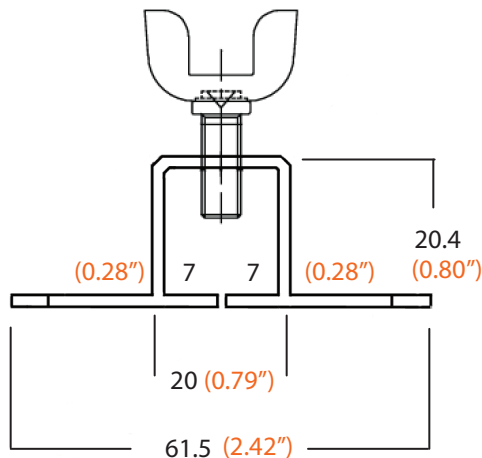
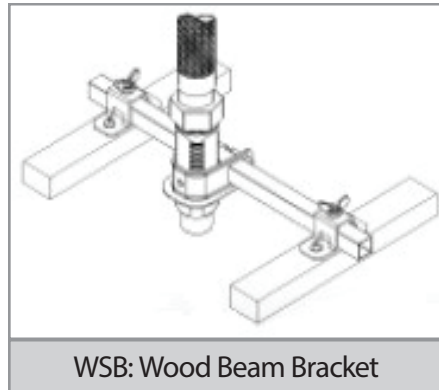
Scale	NS
Material	ASTM A-366
Tolerance	±0.2
Thickness	2.0mm
Spec.	Zinc Plated
Coating durability	No indication of peeling
Anti-Corrosion	No indication of corrosion with salt spray test.

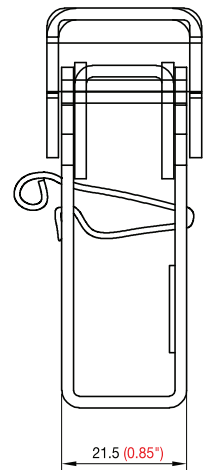




Brackets for Wood Beam | *WSB*

Title	Wood Beam Bracket (WSB)
Scale	NS
Material	ASTM A - 366
Tolerance	± 0.2
Thickness	2.0mm, ±0.05
Spec.	Zinc Plate
Coating Durability	No indication of peeling
Anti-Corrosion	No indication of corrosion with salt spray test







Elbow Reducer | ***LRD (LRDS or LRDL)***

Scale	NS
Material	ASTM A-53, Gr A
Tolerance	±0.2
Thickness	12.7µm
Spec.	Zinc Plated
Coating durability	No indication of peeling
Anti-Corrosion	No indication of corrosion with salt spray test.

